

APP CRS	Rwy Idg	6869
184°	TDZE	13
	Apt Elev	15

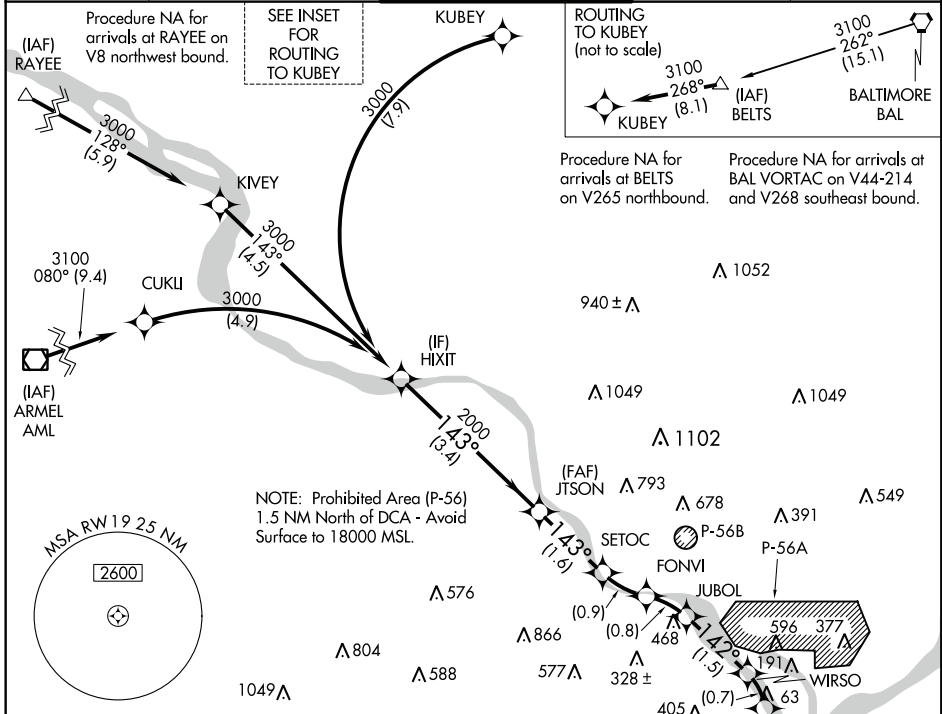
RNAV (RNP) RWY 19

RONALD REAGAN WASHINGTON NATIONAL (DCA)

⚠ For uncompensated Baro-VNAV systems, procedure NA below -10°C (14°F) or above 54°C (130°F). Inop table does not apply. **RF and GPS required.** When VGSi inop, procedure NA.

MALSF MISSED APPROACH: Climb on the final approach track to RW19 then direct BADDN to 1600 and hold.

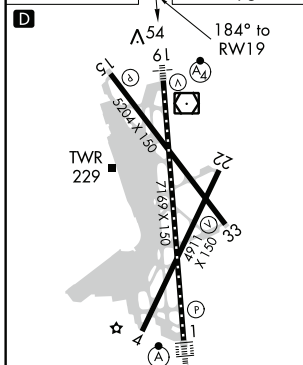
ATIS	POTOMAC APP CON	WASHINGTON TOWER	GND CON	CLNC DEL
132.65	124.7 338.2	119.1 257.6	121.7 257.6	128.25



NE-3, 11 DEC 2014 to 08 JAN 2015

NE-3, 11 DEC 2014 to 08 JAN 2015

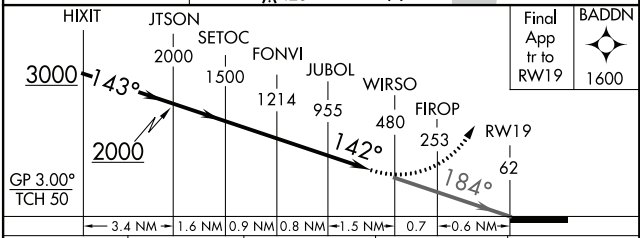
ELEV 15	TDZE 13
---------	---------



TDZ/CL Rwy 1
 REIL Rwy 15 and 33
 HIRL Rwy 1-19 and 15-33
 MIRL Rwy 4-22

MISSED APCH FIX
 BADDN

4 NM



CATEGORY	A	B	C	D
RNP 0.11 DA		491-1½	478 (500-1½)	
RNP 0.30 DA		550-1¾	549 (600-1¾)	

AUTHORIZATION REQUIRED