

LOC/DME I-MPV	APP CRS	Rwy Idg	5002
108.7	168°	TDZE	1135
Chan 24		Apt Elev	1165

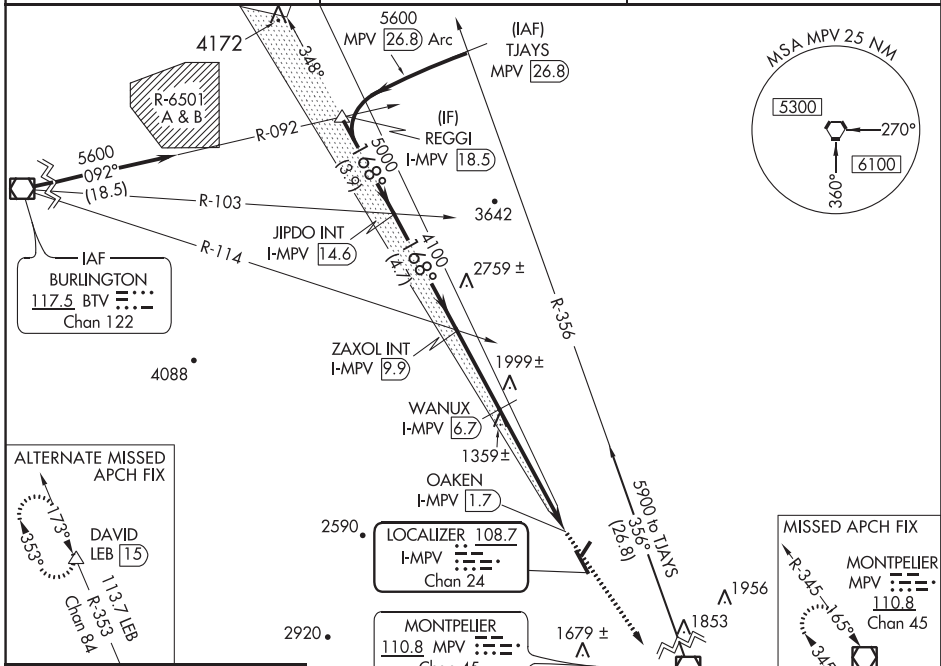
ILS or LOC RWY 17

EDWARD F. KNAPP STATE (MPV)

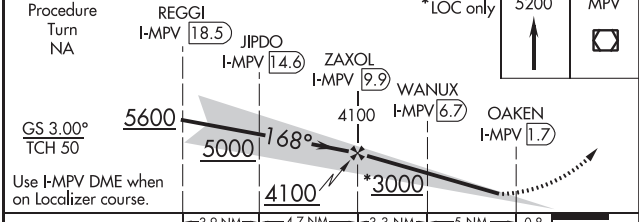
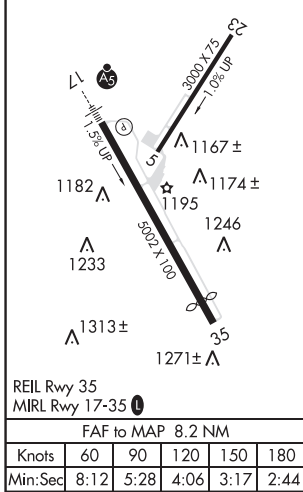
⚠ Inoperative table does not apply to S-LOC 17 Cats A and B. Visibility reduction by helicopters NA. For inoperative MALSR, increase S-ILS 17 all Cats visibility to 1/4 mile, and WANUX Fix minimums S-LOC 17 Cat A and B visibility to 1 mile.

MALSR MISSED APPROACH: Climb to 5200 direct MPV VOR/DME and hold, continue climb-in-hold to 5200.

ASOS 132.675	BOSTON CENTER 135.7 282.2	UNICOM 122.8 (CTAF)
------------------------	-------------------------------------	-------------------------------



ELEV 1166	TDZE 1135
-----------	-----------



CATEGORY	A	B	C	D
S-ILS 17	1435-3/4 300 (300-3/4)			
S-LOC 17	3000-1 1/4 1865 (1900-1 1/4)	3000-1 1/2 1865 (1900-1 1/2)	3000-2 1/2 1865 (1900-2 1/2)	1865 (1900-2 1/2)
CIRCLING	3000-1 1/4 1834 (1900-1 1/4)	3000-1 1/2 1834 (1900-1 1/2)	3000-3	1834 (1900-3)
WANUX FIX MINIMUMS				
S-LOC 17	1780-3/4 645 (700-3/4)	1780-1 1/4 645 (700-1 1/4)	1780-1 1/2 645 (700-1 1/2)	1780-1 1/2 645 (700-1 1/2)
CIRCLING	1940-1 774 (800-1)	1940-1 1/4 774 (800-1 1/4)	1940-2 1/4 774 (800-2 1/4)	2480-3 1314 (1400-3)

NE-1, 24 JUL 2014 to 21 AUG 2014

NE-1, 24 JUL 2014 to 21 AUG 2014